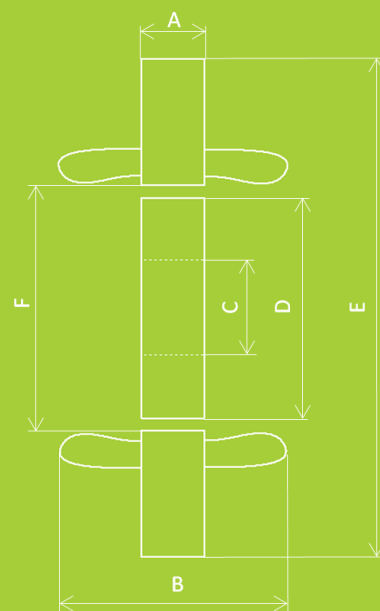


TES Special permanent magnet synchronous generators - Pilot exciters

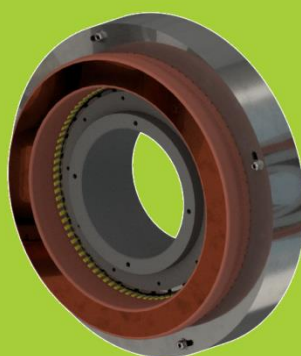
Special synchronous generators with permanent magnets, which are used for power supply of automatic voltage regulators of synchronous machines and other devices with suitable parameters. The maximum power of the pilot exciters is 3500VA. Speed range 0 - 1500rpm. Main dimensions according to the table below. The specific voltage range according to the way of inter-connection of individual windings is shown on the graphs below.

Main dimensions:

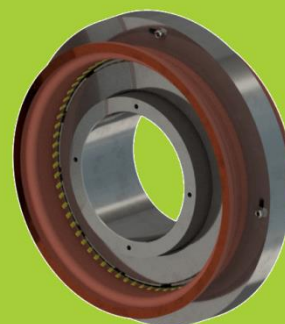
Dimension	A	B	C	D	E	F
	[mm]	[mm]	[mm]	[mm]	[mm]	[mm]
BP250S12	50	210	260	369	500	374,8
BP315S30	80	210	260	334,2	540	340
BP400S48	57	210	260	614,2	735	620



BP400S48

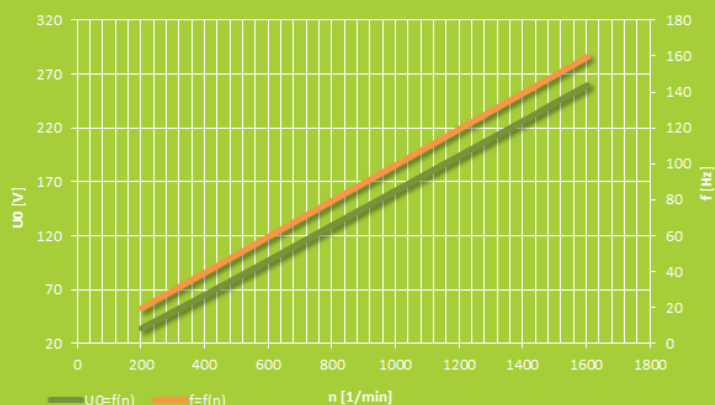


BP315S30

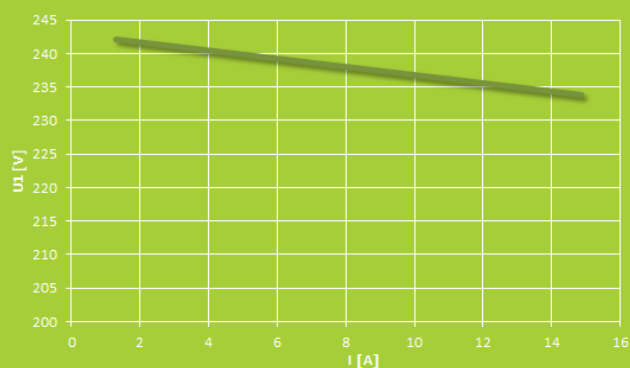


BP250S12

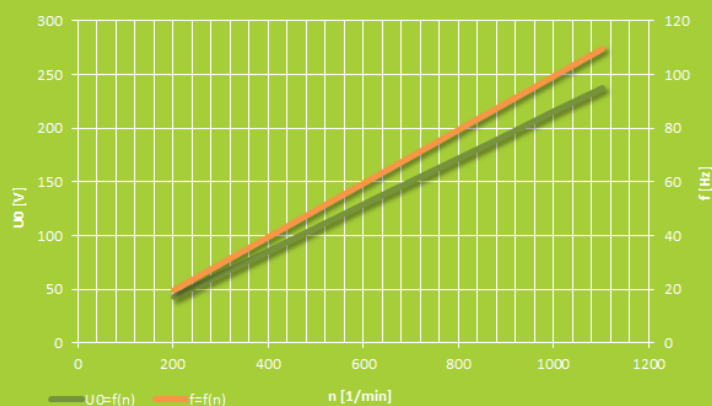
BP250S12



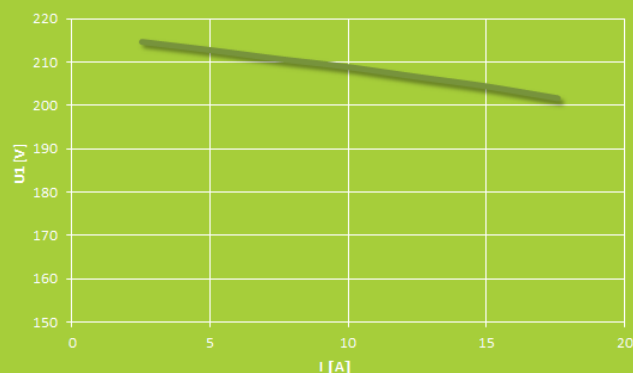
Voltage and frequency dependence on speed for connection with four parallel branches



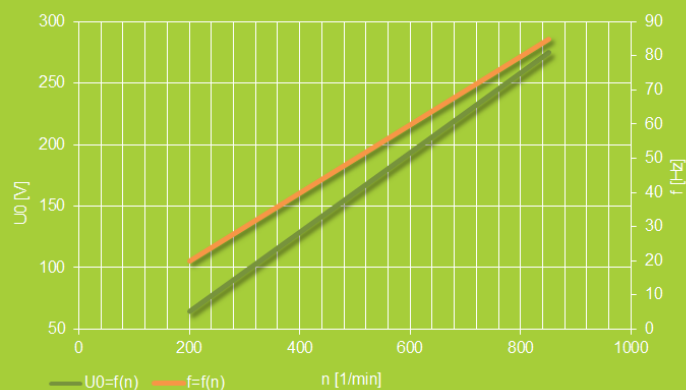
Voltage versus load current for connection with four parallel branches (speed 1500 rpm)



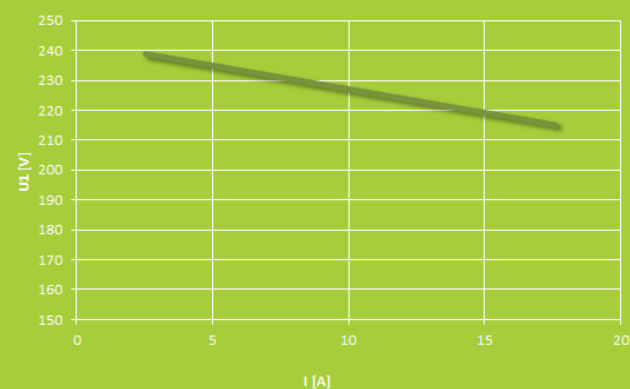
Voltage and frequency dependence on speed for connection with three parallel branches



Voltage versus load current for connection with four parallel branches (speed 1000 rpm)

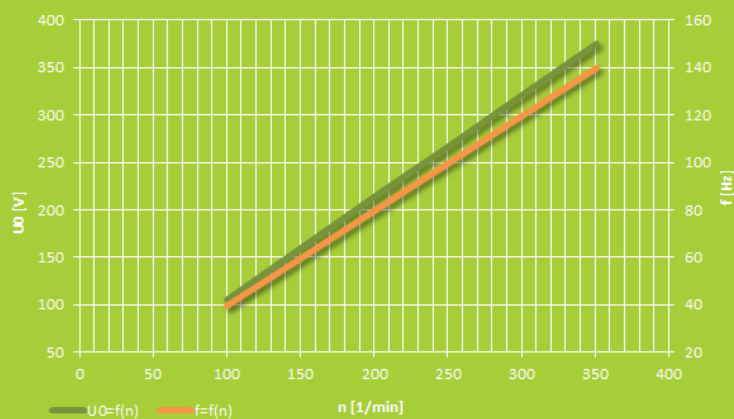


Voltage and frequency dependence on speed for connection with two parallel branches

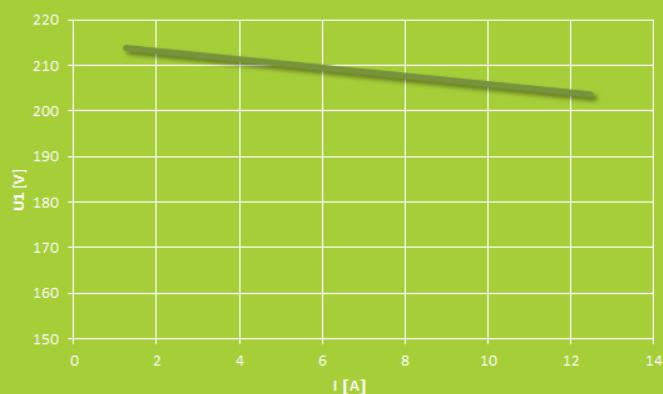


Voltage versus load current for connection with four parallel branches (speed 750 rpm)

BP315S30



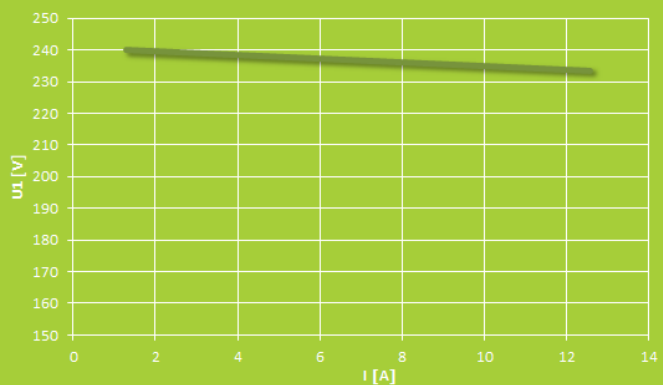
Voltage and frequency dependence on speed for connection with ten parallel branches



Voltage versus load current for connection with four parallel branches (speed 600 rpm)

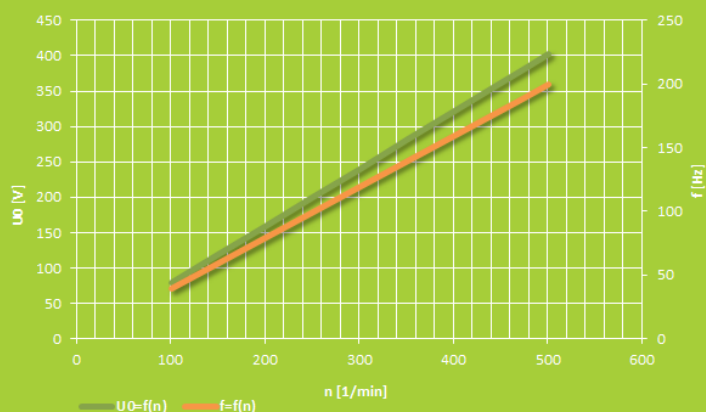


Voltage and frequency dependence on speed for connection with five parallel branches

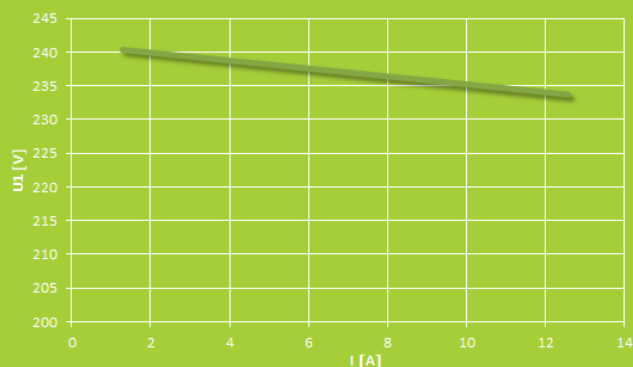


Voltage versus load current for connection with four parallel branches (speed 300 rpm)

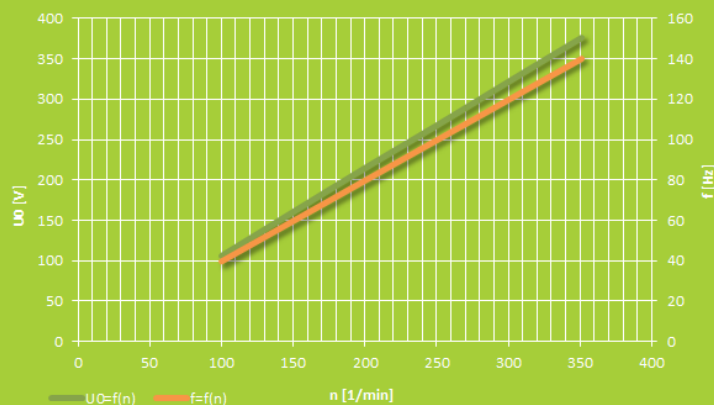
BP400S48



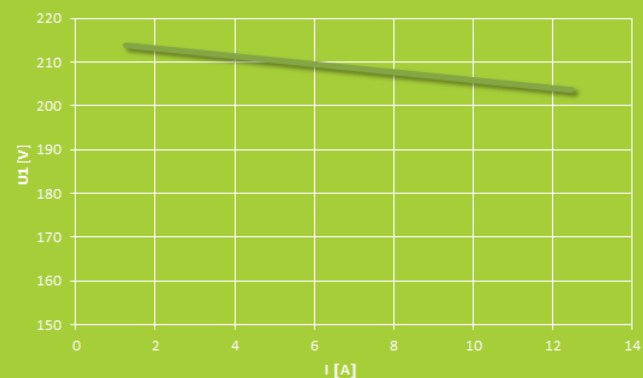
Voltage and frequency dependence on speed for connection with four parallel branches



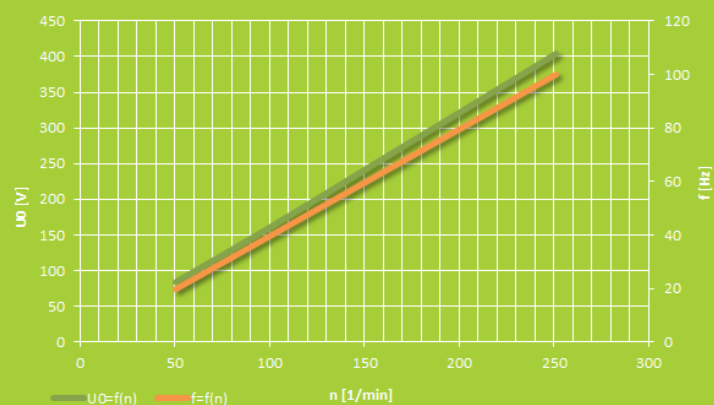
Voltage versus load current for connection with four parallel branches (speed 300 rpm)



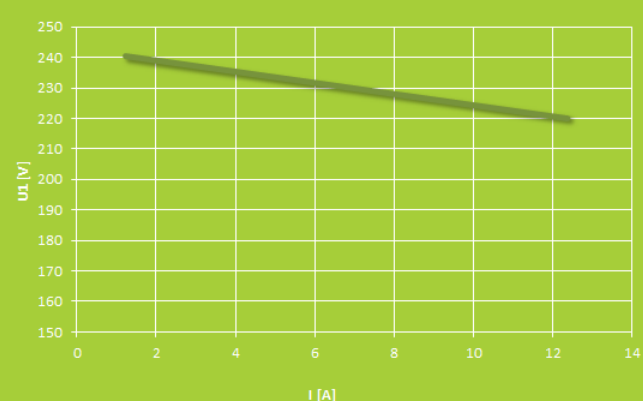
Voltage and frequency dependence on speed for connection with three parallel branches



Voltage versus load current for connection with four parallel branches (speed 200 rpm)



Voltage and frequency dependence on speed for connection with two parallel branches



Voltage versus load current for connection with four parallel branches (speed 150 rpm)